

NOTICE TO MARINERS

OFFSHORE SEISMIC SURVEY: SOUTH-WEST COAST, SOUTH AFRICA

Petroleum Geo-Services (PGS), on behalf of Anadarko South Africa (Pty) Ltd, will be conducting a 3D seismic survey, commencing **01 January 2020**, using the survey vessel **M/V RAMFORM ATLAS**. The survey area is situated in Petroleum Licence Block 5/6/7 situated off the South-West Coast of South Africa. The survey area extends between Cape Point and Gansbaai at a distance of between 70 km and 130 km from the coast in water depths ranging between 500 m and 3000 m. The survey is expected to be completed by the end of April 2020, excluding any downtime due to bad weather.

The vessel will be towing an array of 10 cables, which will extend 8025m astern and 1800m wide. The towed array will be submerged at a depth of 20 m and will not be visible at the water surface except for a tail-buoy marking the end of each cable. The vessel is **severely** restricted in her ability to stop or turn and needs a **minimum clearance of 3 nautical miles ahead and abeam, and 7 nautical miles astern** from vessel and gear. If you are passing or plan to fish in the proximity of the area shown in the figure below, please advise the Survey Vessel **M/V RAMFORM ATLAS** of your position on VHF Channel 16 / 2182 kHz / 4146 kHz. The support vessel **M/V Thor Freyja** and escort vessel **M/V Olga** will be in attendance during the survey. A Fisheries Liaison Officer (FLO) will be on board for the duration of the survey to assist with communications. Your assistance in this matter would be greatly appreciated and we apologize for any inconvenience caused.



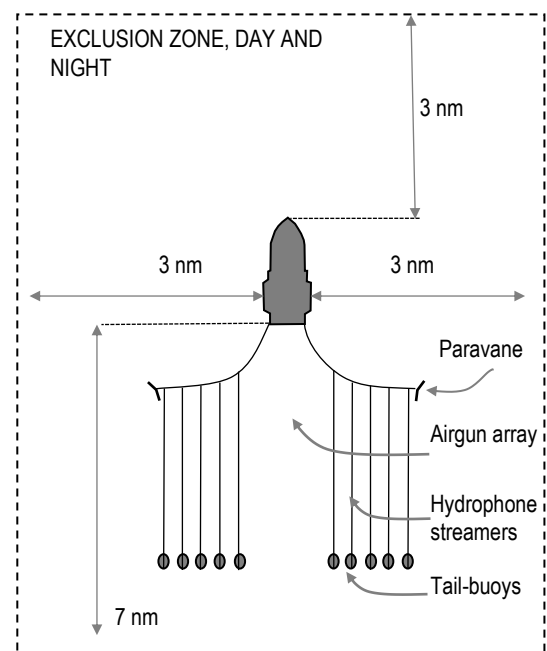
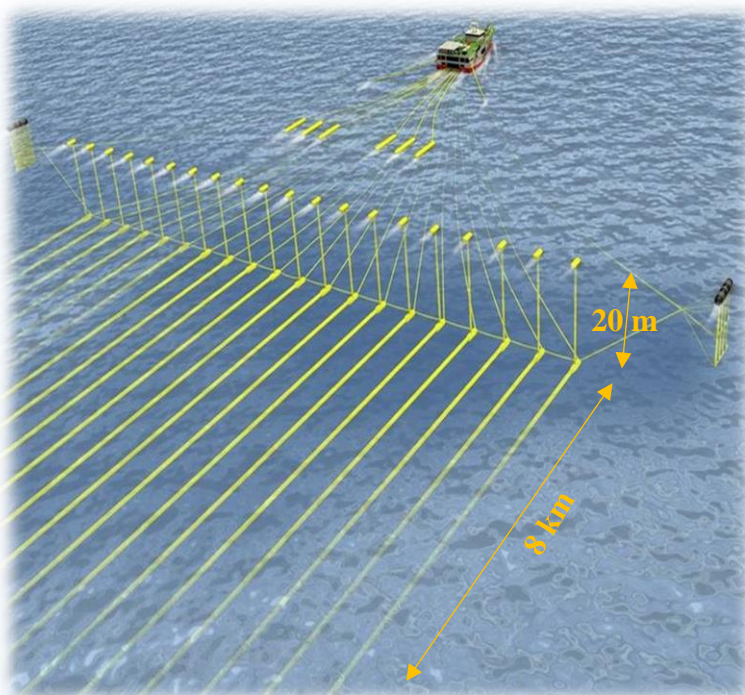
Survey Vessel : *M/V Ramform Atlas*
 Operator : PGS Exploration
 Flag : Bahamas
 Call sign : C6AX2
 Length : 104 m



Escort Vessel : *M/V OLGA*
 Operator : Rederij Groen BV
 Flag : Vanuatu
 Call sign : YJWP2
 Length : 37 m



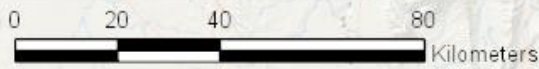
Support Vessel : *M/V Thor Freyja*
 Operator : P/F Thor
 Flag : Bahamas
 Call sign : C6B16
 Length : 64 m



Not to scale

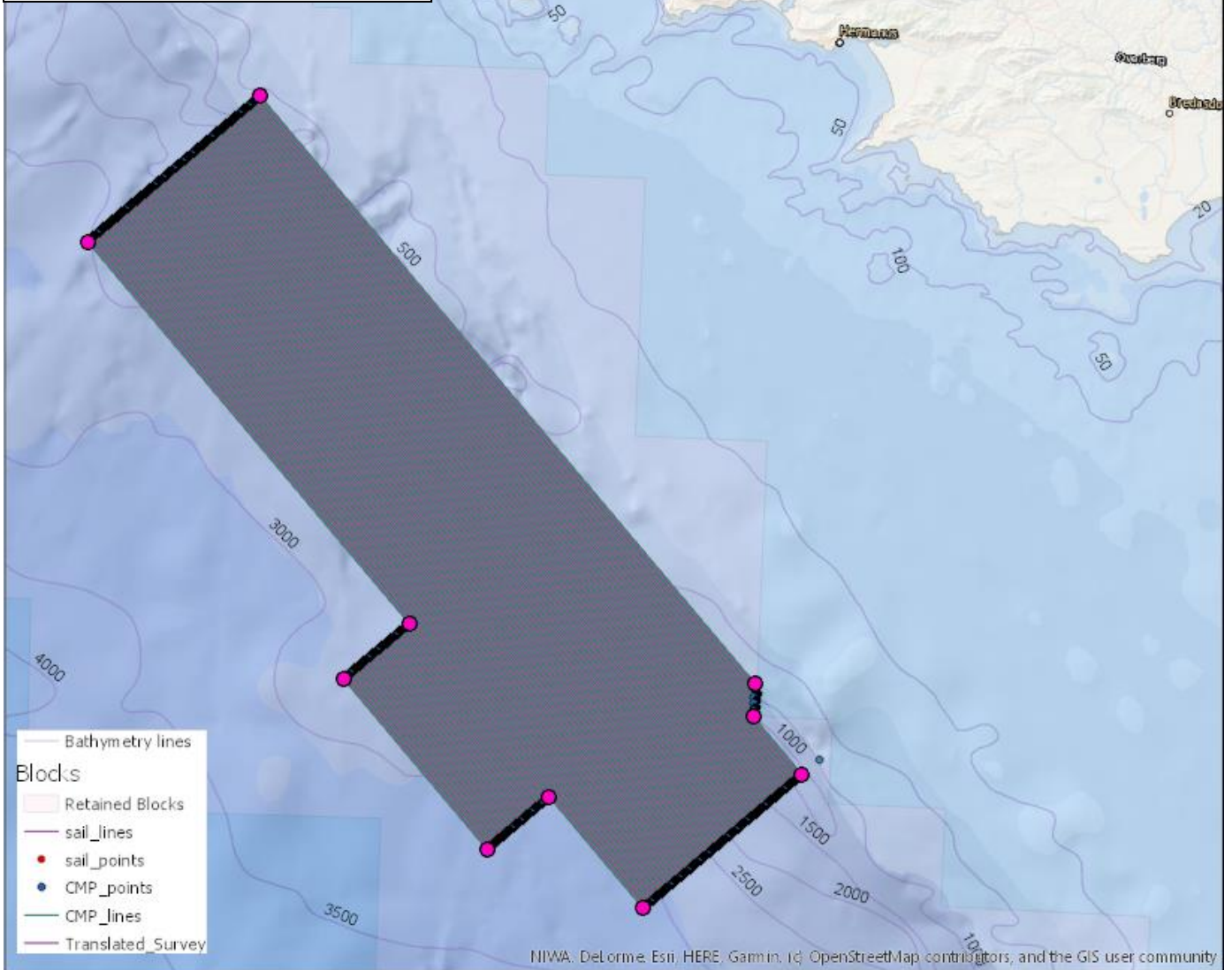
Cape 3D seismic survey

WGS 84 - UTM 33 S



Survey Area Boundary Co-ordinates

Point	Latitude (S)	Longitude (E)
1	35° 56.658' S	18° 36.533' E
2	36° 03.188' S	18° 27.664' E
3	35° 43.398' S	18° 05.747' E
4	35° 36.577' S	18° 15.152' E
5	34° 52.007' S	17° 26.669' E
6	34° 34.055' S	17° 51.147' E
7	35° 42.114' S	19° 06.026' E
8	35° 46.112' S	19° 06.027' E
9	35° 52.746' S	19° 13.502' E
10	36° 09.524' S	18° 50.949' E



NIWA, DeLorme, Esri, HERE, Garmin, IGD, OpenStreetMap contributors, and the GIS user community

Should you wish to receive daily updates on the survey progress and location of the survey vessel please contact:
CapMarine (Pty) Ltd: Email: sarah@capfish.co.za; T: +27 21 4256226; M: +27 82 7289673